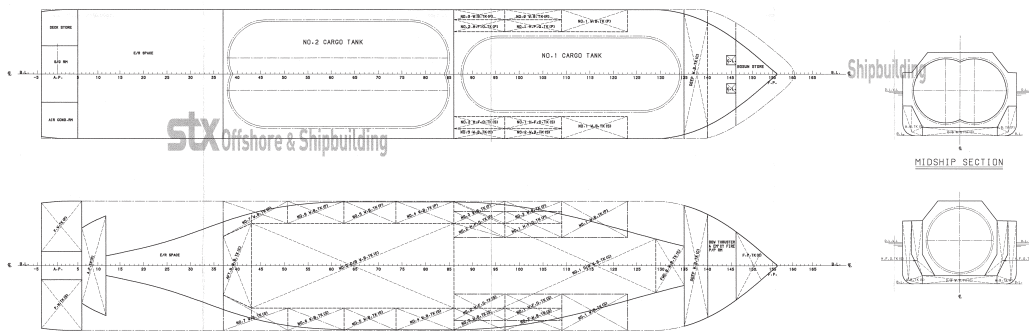


STX Offshore & Shipbuilding



STX Offshore & Shipbuilding

Shipbuilding
MIDSHIP SECTION

Zetagas

Year built	exp. January 2013
Type	Ethylene-Carrier
LOA / LBP	113,00 m / 106,00 m
Breadth	19,20 m
Draft	10,60 m
DWT	tbd
GRT / NRT	tbd / *tbd
Speed	abt. 15,5 knts
Cargo Tanks	
Quantity	2
Capacity	6.800 m ³

*tbd = to be determined

